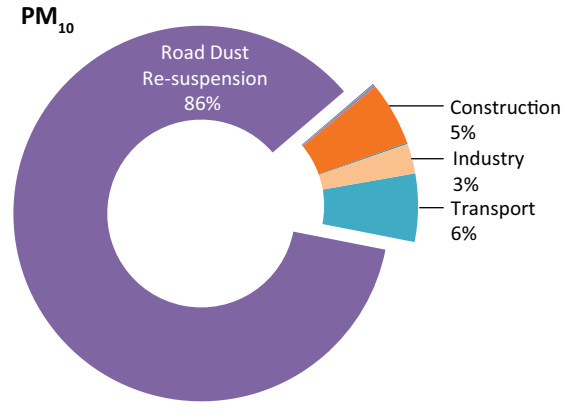


# Clean Construction Guidelines to Mitigate Air Pollution at Construction Sites

## PM<sub>10</sub> Source Contributions in Lucknow

- Construction activities that contribute to air pollution include:
- Emissions from cutting, drilling, grinding, scabbling, sand and grit blasting and façade cleaning
  - Vehicles and machinery on site
  - Land clearing and demolition activities
  - Handling storage and spillage of material



**Welders and cutters**  
Using water sprays for cutting, local exhaust system for indoor welding & regular monitoring

**Sanding**  
Use water spray, dry wall sanders, wear N99 mask by workers

**Cutting roadways, pavements, blocks** using a diamond-bladed floor saw with water pump

**Raking out mortar/pointing**  
Usage of mortar raking kit, super-saw with oscillating blades

**Scabbling**  
Pre-wash work surfaces, screening off areas

**Sand, grit or shot blasting and facade cleaning**  
Usage of silica-free material, seal windows and openings with polyethylene sheeting

## Control Measures for Emissions from Other Construction Activities

## Control Measures for Vehicles and Machinery at the Site

Regulation of site traffic by enforcing speed limit and restricting traffic movement

Employing DG sets & retrofit emission control devices

Vehicle maintenance, compliance with government norms for construction equipment vehicles (CEV) & reduce idling time

Hauling of roads and traffic routes by regular cleaning, sprinkling of water, use of chemical suppressants

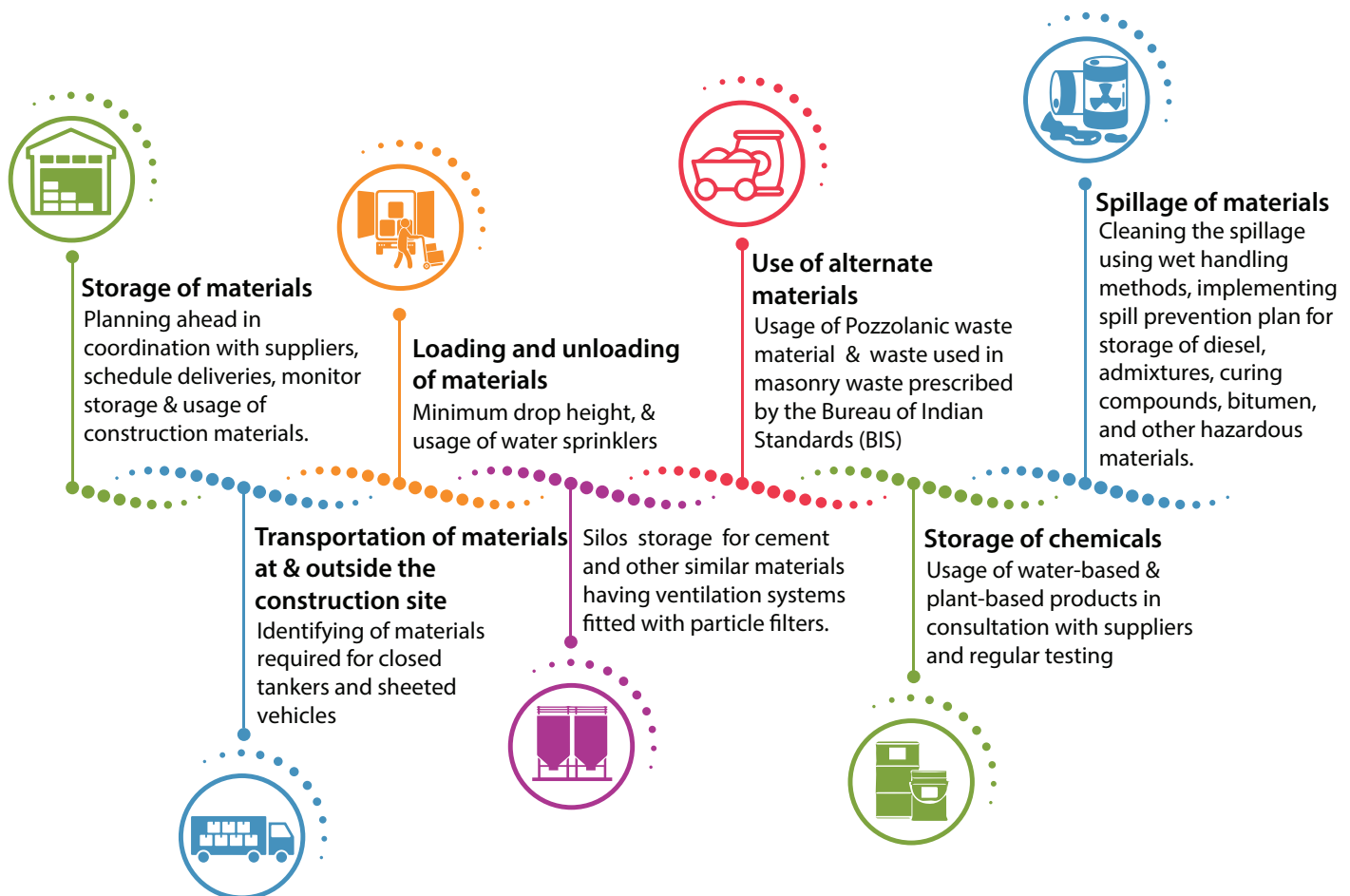
Development of a vehicle-waiting area and hard standings

Trackout by paving & cleaning procedure

# Good Construction Practices for Land Clearing and demolition activities



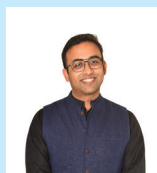
## Control Measures for Handling Storage and Spillage of Materials



For more information:



Dr Anju Goel, Associate Director,  
Air Quality Research Division  
Email: agoel@teri.res.in



Mr Nimish Singh, Fellow, Centre  
for Air Quality Research  
Email: nimish.singh@teri.res.in



Ms Sourosree Lahiri, Project  
Associate, Centre for Air  
Quality Research  
Email: s.lahiri@teri.res.in